



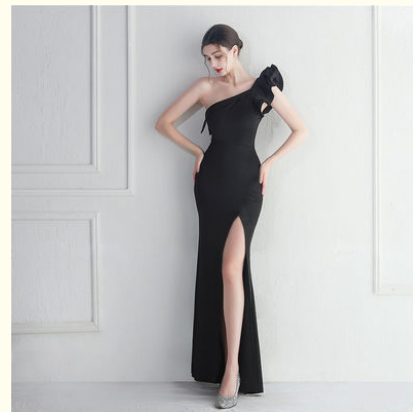
## Black Slim Evening Dress Irregular Ruffled Edge Sexy Floor Length Dress With Hip Bag

Our Product Introduction

for more products please visit us on [stylishladydress.com](http://stylishladydress.com)

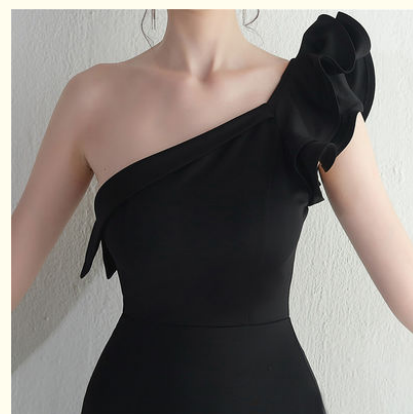
### Basic Information

- Place of Origin: guangzhou.china
- Brand Name: Venus
- Model Number: 9556
- Minimum Order Quantity: expand on
- Price: expand on

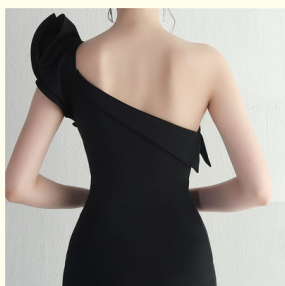


### Product Specification

- Material Component: Spandex
- Manufacturing Method: Tatting
- Pattern: Pure Color
- Style: Oblique Shoulder
- Waist: Tight Dress
- Craft: Handmade Flower
- Fashion Element: High Split
- Pattern Design: Trim Fit
- Highlight: **Black Slim Evening Dress, Slim Evening Dress Irregular Ruffled, Sexy Floor Length Dress With Hip Bag**



### More Images



## Product Description

Slim evening dress with irregular ruffled edge and single shoulder drop to the floor sexy dress with hip bag

characteristic

This slim evening dress with irregular peplum edge is made of comfortable and skin-friendly fabrics, and the solid color one-shoulder slim dress is more able to highlight the temperament. The skirt is made of fishtail style, and the irregular peplum edge represents the unique existence.

describe

material component	spandex	pattern	pure color
manufacturing method	tatting	style	grace
waist-full form	waistline	style	one shoulder
fashion element	falbala	skirt's hemline	fishtail skirt

**VINAS DRESS** Guangzhou Vinas clothing technology Co., LTD



15827133024



leopeng15827133024@gmail.com



stylishladydress.com

Building F, No. 3 Nanpu Nangui Road, Luopu Street, Panyu District, Guangzhou City